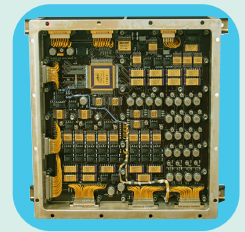
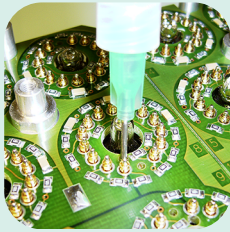
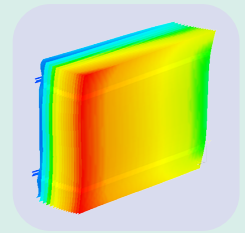
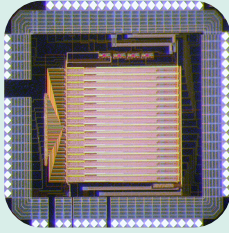
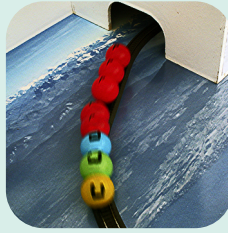
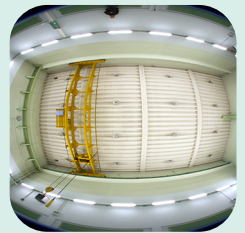
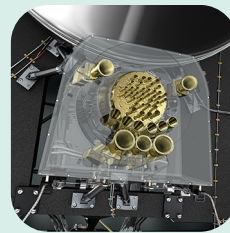
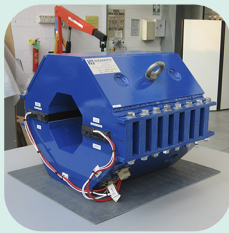
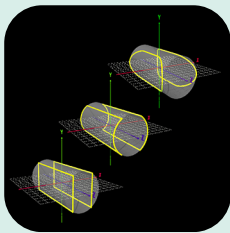
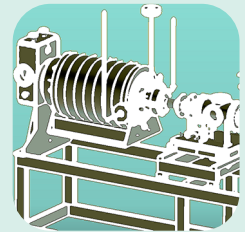
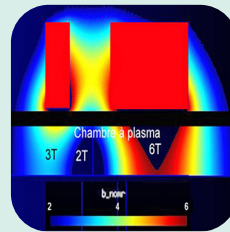
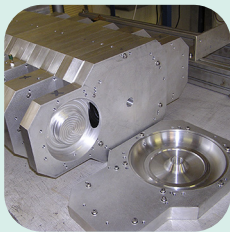
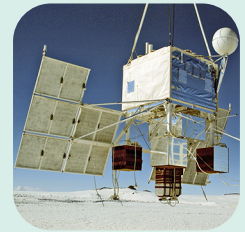
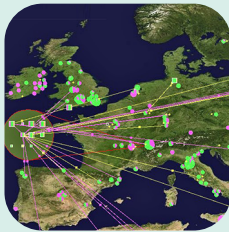
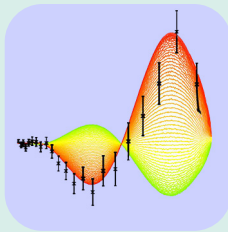
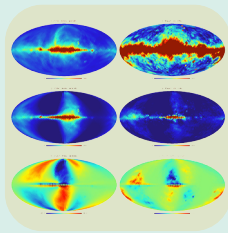
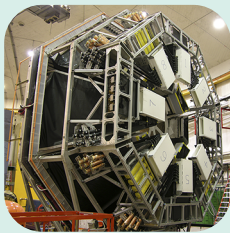


Rapport d'activité

2006

2007



cosmologie et rayons cosmiques

ams cream plank auger codalema

hadrons et noyaux énergie nucléaire

alice jlab structure nucléaire physique des réacteurs

quarks et leptons

symétries fondamentales atlas ilc d ϕ

granit nedm physique théorique

interdisciplinaire plasmas

tomographie pôle accélérateurs

services techniques et administratifs

M51

Laboratoire de Physique Subatomique et de Cosmologie

UMR 5821 CNRS-IN2P3 / UJF / INPG Téléphone 33(0)4 76 28 40 00
 53 avenue des Martyrs Télécopie 33(0)4 76 28 40 04
 38026 GRENOBLE CEDEX <http://lpsc.in2p3.fr>

